

# Study in one of the UK's best student cities

A guide to Sheffield Hallam University  
for exchange and study abroad students



# Welcome to Sheffield



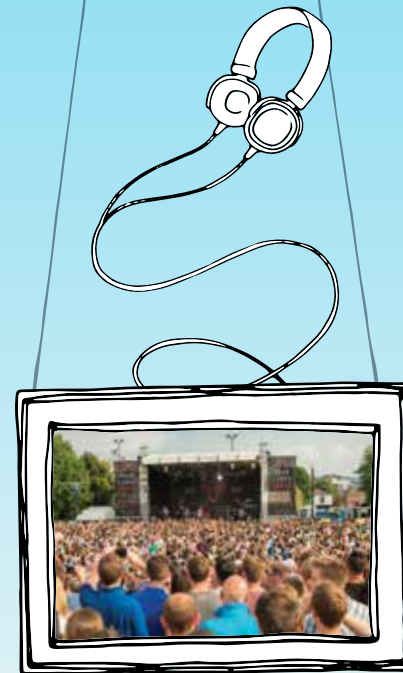
A THRIVING  
INDEPENDENT  
SHOPPING  
SCENE

ONE OF THE  
UK'S LARGEST  
SHOPPING CENTRES  
MEADOWHALL HAS  
NEARLY 300 STORES



FIVE  
MULTISCREEN  
CINEMAS  
AND NINE  
ART GALLERIES

HOME TO  
MAJOR MUSIC  
AND FILM  
FESTIVALS  
ATTRACTING OVER  
100,000 PEOPLE

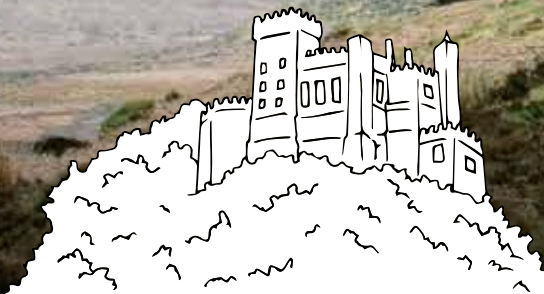


THE  
LARGEST UK  
THEATRE  
COMPLEX  
OUTSIDE OF LONDON



WORLD-CLASS  
CLIMBING, HIKING  
AND CYCLING

SPECTACULAR  
HISTORIC  
BUILDINGS  
INCLUDING  
CHATSWORTH HOUSE  
AND BOLSOVER CASTLE



AMONG THE  
GREENEST  
CITIES  
IN EUROPE



# Study abroad at Sheffield Hallam University

Enhance your studies and experience life in the UK as an exchange or study abroad student at Sheffield Hallam University. Meet new people and expand your horizons as you study with us for one semester or a full year.

As a university we are home to more than 31,000 students from over 113 countries, so as an exchange or study abroad student you'll benefit from being immersed in a diverse range of cultures and the opportunity to improve your language skills.



## Why do an exchange or study abroad?

Studying overseas is a unique and hugely beneficial experience that will stay with you for the rest of your life. You'll:

- Gain an in-depth understanding of life in the UK
- Improve your language skills
- See your subject from a different perspective
- Benefit from exposure to different cultures
- Enhance your resume – and your career prospects
- Increase your confidence, independence and life skills
- Make new friends
- Gain transferable credits

## What are my options?

### EXCHANGE

Sheffield Hallam is a great place to come if you want to do an exchange. We have been welcoming exchange students for many years and have both Erasmus+ and international exchange agreements with over 100 institutions worldwide in a variety of subject areas.

If you are interested in studying with us on an exchange programme you will need to check that we have an exchange agreement with your university in the subject area you are studying and whether there are places available.

You will need to discuss any possible exchange with your exchange co-ordinator and/or staff in your international office before you complete an application.

Visit [shu.ac.uk/exchanges](https://www.shu.ac.uk/exchanges) for more information on our exchange programme.

### STUDY ABROAD

This is the ideal option for students studying at a university that does not have an exchange agreement in place with Sheffield Hallam University.

With our study abroad programme, you can study in Sheffield for one semester or a full year, and there is a huge range of routes available to suit your current studies. For a full list of subjects and routes please visit [shu.ac.uk/studyabroad](https://www.shu.ac.uk/studyabroad).

If you plan to study for one semester, you can choose from a September or January intake and on successful completion you'll be awarded an International Certificate in your chosen subject. If you'd like to come to Sheffield for a full year, you'll have a September start date and on successful completion you'll be awarded an International Diploma in your chosen subject.



## Study Abroad programme

### What are the entry requirements?

To apply to the study abroad programme, you'll need to be studying towards a degree at a recognised university, and have completed at least one year of your course. This means you will join us during or at the start of your second year of study. You will also need to provide evidence of your existing credits and proficiency in English.

### Can I take the credits back home?

You are able to gain transferable credits plus a Sheffield Hallam University Award for your time in Sheffield. However, you will need to check that your home institution will accept these as credits towards your degree.

### Visa requirements

You will need to check if you require a visa to study in the UK: [www.gov.uk/check-uk-visa](https://www.gov.uk/check-uk-visa)

You must hold a valid UK visa that entitles you to study at Sheffield Hallam University before you can begin your course with us.

Visas can take several weeks to come through once you've completed your application, so make sure you leave yourself plenty of time.

If you need support with your visa application, our student experience advisers can offer help via Skype and email. All information can be found in our welcome guide.

## Important dates

Submit your application by

- 1 December for the January intake
- 31 July for the September intake

Applications are accepted after this date, but will be processed on a case by case basis.

Apply for accommodation at Devonshire Courtyard by

- 1 August for the September intake
- 1 December for the January intake



# What will it cost?

If you're an Erasmus or exchange student, you won't need to pay any additional tuition fees during your time in Sheffield. However, you will need to cover your own accommodation and living costs.

If you are a study abroad student, you'll need to pay tuition fees. More information on fees can be found online at [shu.ac.uk/studyabroad](http://shu.ac.uk/studyabroad).

## Living costs

Sheffield has a low cost of living compared to other major UK cities, meaning your money will go further. Living costs here are significantly lower than in London.



# Your new home

Don't worry about finding somewhere to stay during your time in Sheffield – we've already done it for you! We reserve places for those studying on an exchange or study abroad programme within our popular Devonshire Courtyard complex.

Devonshire Courtyard is located right in the city centre, so everything Sheffield has to offer will be right on your doorstep and you'll never be short of things to see and do. With great access to public transport, you'll easily be able to explore Sheffield and the surrounding area such as the Peak District.

Your place at Devonshire Courtyard is guaranteed if you apply for your accommodation through our accommodation services by 1 August for the September intake and 1 December for the January intake.

Details on the cost of staying at Devonshire Courtyard can be found at [shu.ac.uk/studyabroad](http://shu.ac.uk/studyabroad) or email [accommodation@shu.ac.uk](mailto:accommodation@shu.ac.uk)

We do offer a range of alternative accommodation should this not suit your needs. For more information visit [shu.ac.uk/accommodation](http://shu.ac.uk/accommodation)



## Affordable accommodation

Living at Devonshire Courtyard is affordable – it costs less than half the price of renting a similar place in London. You'll also save on travel costs as the complex is centrally located, just a short walk from both City and Collegiate Campus.



## Safe and secure

You'll always feel secure at Devonshire Courtyard, thanks to CCTV and 24-hour security. All our properties are inspected to ensure they comply with our strict standards.



## Make friends for life

Many of our exchange students build life-long friendships in our residences. From cups of tea with friends to late night movies, it's where some of the best university moments happen.

Find out more  
[shu.ac.uk/accommodation](http://shu.ac.uk/accommodation)



“Staying in halls for short-term students was so exciting. I met some best friends there, living together. I enjoyed how Sheffield was so easy to get around – I basically walked everywhere and where I was living was in the centre of town.”

**Alice Thacker**  
Fine art student from Australia

# Where is Sheffield?

Sheffield is the UK's fifth largest city. It's home to around 500,000 people and 60,000 students.

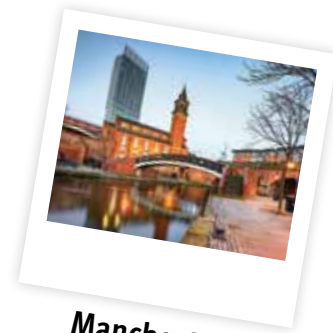
We're right in the middle of the country, with excellent transport links to other UK cities. We are just two hours from London and one hour from Manchester by train.

Our City Campus is a few minutes' walk from the city's main bus and train stations. There are student discounts on bus, train and coach travel.

Sheffield is also close to major airports such as Doncaster Sheffield and Manchester, allowing easy connections to European cities and further afield.

We've got everything you need — from one of Europe's biggest shopping centres to theatres, art galleries, music venues and museums. As a multicultural city, you'll find shops, restaurants and speciality supermarkets that sell products and food from all over the world.

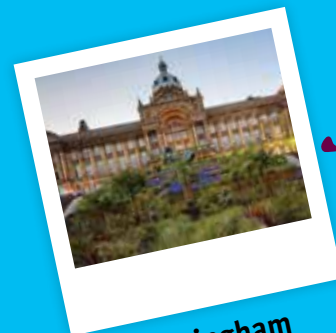
60% of Sheffield is made up of green spaces like parks, gardens and countryside. There are plenty of places to relax or explore in the city or nearby Peak District National Park.



**Manchester**  
Water way canal area



**Edinburgh**  
Edinburgh Castle



**Birmingham**  
Town Hall



**Exeter**  
South tower of Exeter cathedral



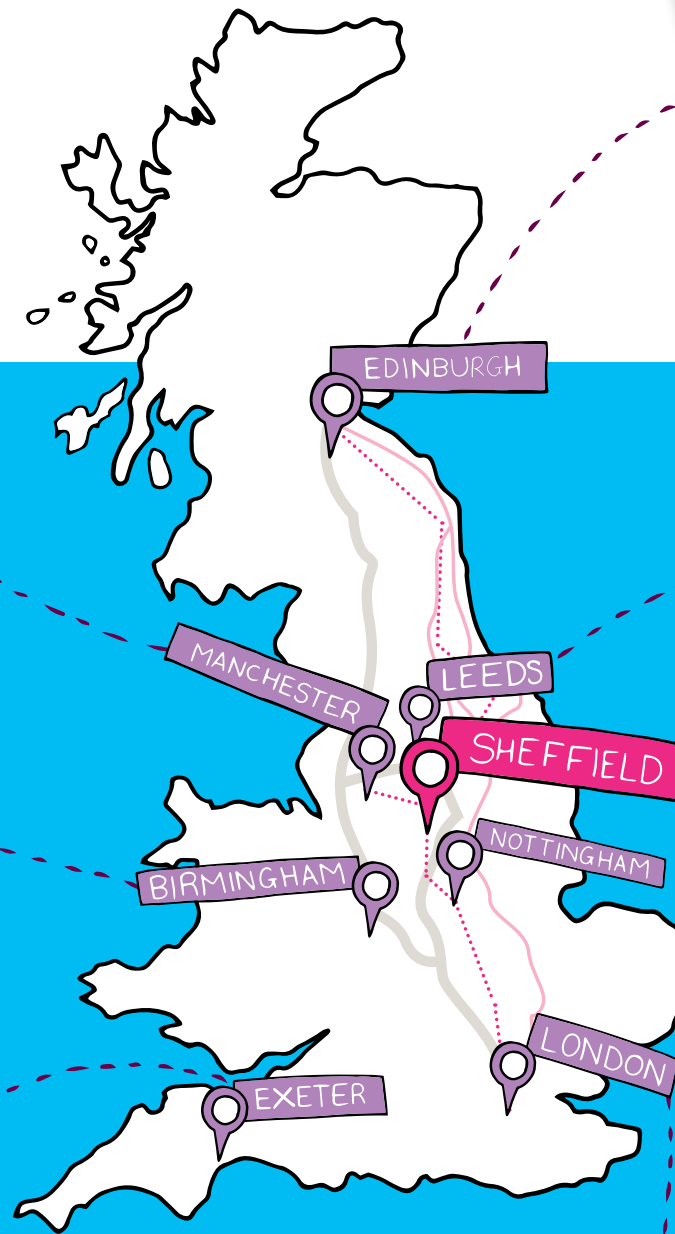
**London**  
Trafalgar Square



**Leeds**  
Leeds city Kirkgate Market



**Nottingham**  
The city hall in the Old Market Square



--- Rail links

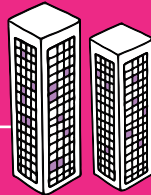
— Major roads

— Motorway

# Hallam in numbers

**60,000**

Students living in Sheffield



**65%** ★★

Research ranked internationally excellent or world-leading, putting us in the top five modern universities\*



**24/7**

Our libraries are open every day, 365 days a year



**140**

Institutions across the world where we have exchange agreements

**47<sup>th</sup>**

Guardian University Guide ranking\*\*

**£100m**

Invested in facilities over the last five years



**94%**

Hallam students in work or further study within six months of graduating\*\*\*



**113**

Countries we welcome students from



**23,000**

Student placements offered every year

**5** ★★★★★

QS Stars international rating\*\*\*\*

\* Research Excellence Framework (REF) 2014

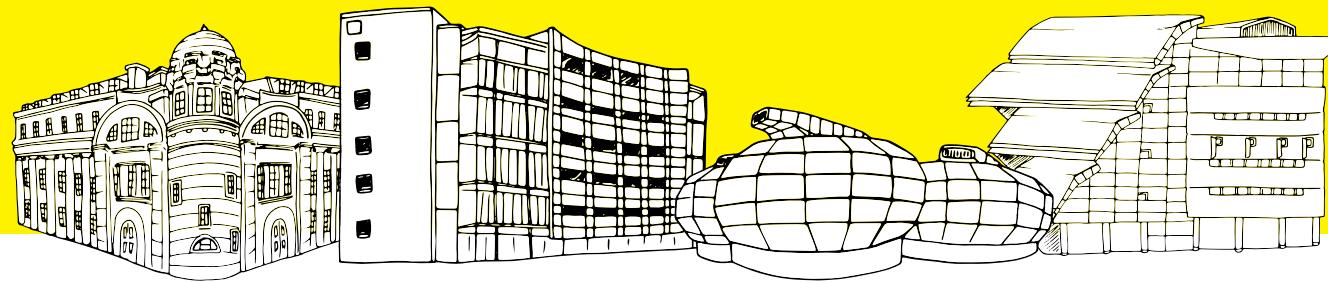
\*\* Guardian University Guide 2021

\*\*\* Destination of Leavers of Higher Education (DLHE) Survey 2016/17

\*\*\*\* QS Stars international rating system 2019



# Find out why we're one of the UK's most popular universities



## Award winning teaching

The Sunday Times Good University Guide named us University of the Year for Teaching Quality 2020. The award recognises our consistently high student satisfaction scores, as measured by independent student experience surveys.

## Research that changes lives

We are one of the leading modern universities in the UK for research. We have 16 research centres and institutes, with a reputation for world-class research.

## Our International Experience Team

We have a dedicated team who can support you from now to when you arrive in Sheffield. We can help you with your visa application and offer a free pick-up service from Manchester Airport.

## Sheffield Hallam Students' Union

The vibrant hub of student life with a bar, café, shop and advice centre and the contact point for more than 60 student-run societies and clubs.

## Adsetts Library

One of our two libraries which are open 24 hours a day, 365 days a year so you can study at the time which suits you. You can book one of 2,000 study spaces and 1,000 computers.



"It was truly amazing to engage with non-native English speakers and learn more about their culture. I can't wait to travel back one day and see all my friends."

Lexi, business student from the USA



"I enjoyed being able to practise my English, spend time with my course mates and learn more about the culture in England. I've gained new knowledge, technical skills and professional contacts, as well as an international point of view."

Camilo, international tourism and hospitality management student from Colombia

"What I enjoyed most about Sheffield and the UK was that it has a very multicultural society, so you meet people from all over the world. Sheffield is the perfect size and is full of students, so there are a lot of things to do and places to go."

Cristina, film and media production student from Spain



# Supporting your career ambitions

## Our network is your network

You benefit from our network of 3,500 businesses including Adidas, Disney, Sony, SAP and the BBC. We regularly invite employers to come to careers fairs on campus so you can talk to them direct about career opportunities.

## Highest rated careers service in the UK

We have a dedicated team of careers advisers at our Careers and Employability Centre. We received a 95% student satisfaction rating for careers support\*.

## Professionally accredited courses

Most of our courses are accredited by professional bodies so we know you're developing the skills in demand in your sector.

## Learn from the experts

Our teaching and research staff are industry and academic experts. They bring an in-depth understanding of their industry or sector to their teaching.

## Putting your knowledge into practice

Whatever you study, you'll have the opportunity to practise applying your knowledge to real projects. Many of our students complete placements, internships or consultancy projects alongside their studies.



# Find out more

If you'd like to study in Sheffield as part of an exchange or study abroad programme, here's your step-by-step guide.

- 1 Visit our website to find out what modules and routes are available. Exchange students can visit [shu.ac.uk/exchanges](https://shu.ac.uk/exchanges) and study abroad students visit [shu.ac.uk/studyabroad](https://shu.ac.uk/studyabroad)
- 2 Check that you meet the entry requirements
- 3 Speak to your university's exchange coordinator or study abroad adviser and get their approval for your application
- 4 Find out whether you'll need a student visa, and if so, apply as early as possible
- 5 Submit your application to study with us, in plenty of time. For exchange, apply by:
  - 31 October for the January intake
  - 31 May for the September intakeFor study abroad, apply by:
  - 1 December for the January intake
  - 31 July for the September intake
- 6 Apply for your accommodation before 1 August or 1 December to be guaranteed a place at Devonshire Courtyard

Remember, we are on hand to answer your questions and provide support throughout the application process. You can contact us at [admissions@shu.ac.uk](mailto:admissions@shu.ac.uk)

For further information on

- how to apply
- what you can study
- visa support

Visit [shu.ac.uk/exchanges](https://shu.ac.uk/exchanges) for exchanges and [shu.ac.uk/studyabroad](https://shu.ac.uk/studyabroad) for our study abroad programme







Co-funded by the  
Erasmus+ programme  
of the European Union

If you're studying at an institution in Europe, you may be able to apply for an Erasmus+ grant\*, co-funded by the European Union, which contributes to the extra costs of living overseas. Contact your institution's Erasmus co-ordinator for more information about Erasmus+ funding.

\*subject to the UK's continued participation in the programme

### Connect with us

 Sheffield Hallam University

 @sheffhallamuni

 sheffhallamuni

 sheffhallamuni

 sheffieldhallamuni